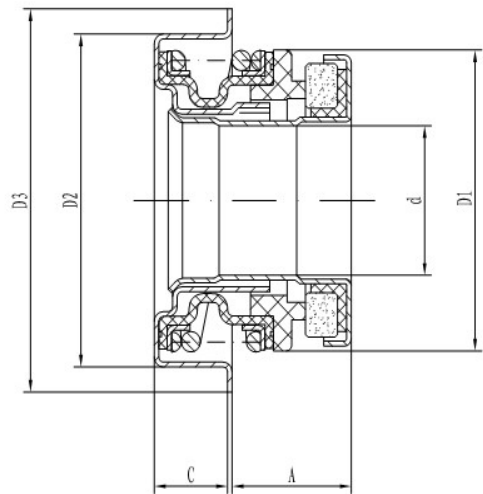


## C16K系列水封 (C16K Series)



### 技术参数 TECHNICAL PARAMETERS

适用介质 (Medium): 清水、内燃机防冻液 (clean water, gas engine antifreeze)

介质压力 (Pressure):  $\leq 0.3\text{MPa}$

适用温度 (Applicable Temperature):  $-35\sim 135^{\circ}\text{C}$

水泵轴转速 (Rotary Speed):  $\leq 6500\text{r/min}$

### 材质 MATERIAL

冲压件、弹簧 (Stamping parts & Spring): 不锈钢 (Stainless Steel)

橡胶件 (Rubber parts): 丁腈橡胶、氢化丁腈橡胶, 长期工作温度 $100^{\circ}\text{C}$ 以上, 建议采用氢化丁腈橡胶。(NBR & HNBR, if long term working temperature is high over  $100^{\circ}\text{C}$ , we suggest use HNBR.)

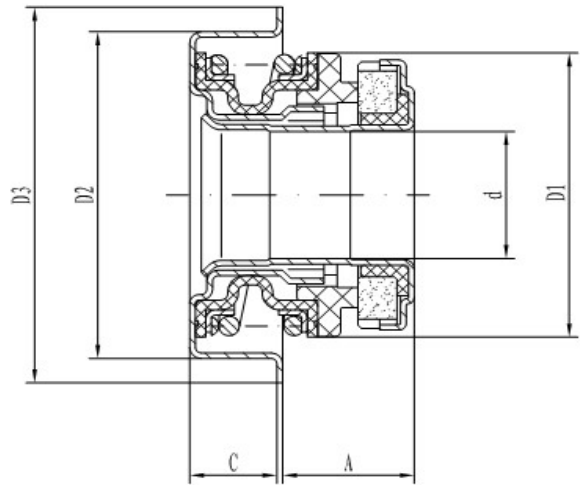
静止环 (Primary Ring): 石墨/碳化硅 (Carbon/Silicon Carbide)

旋转环 (Mating Ring): 陶瓷/碳化硅 (Ceramic/Silicon Carbide)

### 产品规格表 PRODUCT SPECIFICATIONS TABLE

型号 Model	d	A 压装尺寸 Work dimensions	C	D1	D2	D3	备注 Remark
C16K-0	15.918	11.84	7.1	31.5	34.2	39.5	
C16K-1	15.918	10.4	8	31.5	36.5	41	

## C12F/ C16J/ C20系列水封(C12F/C16J/C20 Series)



### 技术参数 TECHNICAL PARAMETERS

适用介质 (Medium): 清水、内燃机防冻液 (clean water, gas engine antifreeze)

介质压力 (Pressure):  $\leq 0.3\text{MPa}$

适用温度 (Applicable Temperature):  $-35\sim 135^{\circ}\text{C}$

水泵轴转速 (Rotary Speed):  $\phi 12 \leq 7200\text{r/min}$ ;  $\phi 16 \leq 6500\text{r/min}$ ;  $\phi 20 \leq 5000\text{r/min}$

### 材质 MATERIAL

冲压件、弹簧 (Stamping parts & Spring): 不锈钢 (Stainless Steel)

橡胶件 (Rubber parts): 丁腈橡胶、氢化丁腈橡胶, 长期工作温度 $100^{\circ}\text{C}$ 以上, 建议采用氢

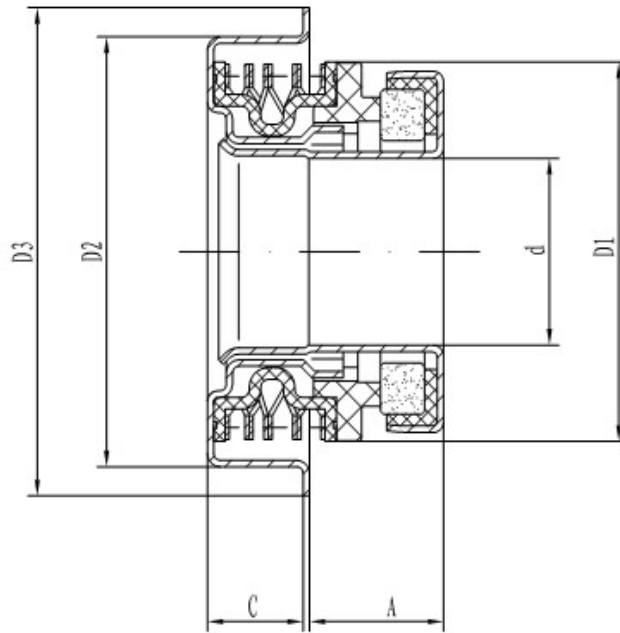
静止环 (Primary Ring): 石墨/碳化硅 (Carbon/Silicon Carbide)

旋转环 (Mating Ring): 碳化硅 (Silicon Carbide)

### 产品规格表 PRODUCT SPECIFICATIONS TABLE

型号 Model	d	A 压装尺寸 Work	C	D1	D2	D3	备注 Remark
C12F-0	12	8.9	7.6	26.5	30	35	
C12F-3	12	8	8.5	26.5	30	35	
C12F-4	12	9.2	7.3	26.5	30	35	
C12F-5	12	9.6	7.6	26.5	30	35	
C12F-6	12	8.8	7.7	26.5	38.1	43.6	
C12F-7	12	9.3	8	26.5	39.5	43.6	
C12F-8	12	9.3	8	26.5	30	35	
C12F-9	12	7.7	8.5	26.5	30	35	
C12F-10	12	7.1	8.5	26.5	30	35	
C16J-1	15.918	10.9	8	31.5	36.5	41	
C16J-2	15.918	11.84	7.1	31.5	34.2	39.5	
C16J-5	15.918	10.4	8	31.5	36.5	41	
C16J-6	15.918	10.9	8	31.5	38.1	43.6	
C16J-7	15.918	10.8	8	31.5	36.4	41	
C16J-8	15.918	10.8	8	31.5	38.1	43.6	
C16J-9	16	10.9	8	31.5	36.5	41	
C16J-10F	15.918	12.3	7	31.5	34.2	39.5	
C20-1-b	20	11.9	10.6	36.5	38.1	43.6	
C20-2-c	20	12	10.6	36.5	52	58	
C20-3	20	12.5	10	36.5	40	46	
C20-4G	20	14.4	8	36.5	38.1	43.6	

## 波形弹簧系列水封 (Wave Spring Series)



### 技术参数 TECHNICAL PARAMETERS

适用介质 (Medium): 清水、内燃机防冻液 (clean water, gas engine antifreeze)

介质压力 (Pressure):  $\leq 0.3\text{MPa}$

适用温度 (Applicable Temperature):  $-35\sim 135^{\circ}\text{C}$

水泵轴转速 (Rotary Speed):  $\leq 7200\text{r/min}$

### 材质 MATERIAL

冲压件、弹簧 (Stamping parts & Spring): 不锈钢 (Stainless Steel)

橡胶件 (Rubber parts): 丁腈橡胶、氢化丁腈橡胶, 长期工作温度 $100^{\circ}\text{C}$ 以上, 建议采用氢化丁腈橡胶。(NBR & HNBR, if long term working temperature is high over  $100^{\circ}\text{C}$ , we suggest use HNBR.)

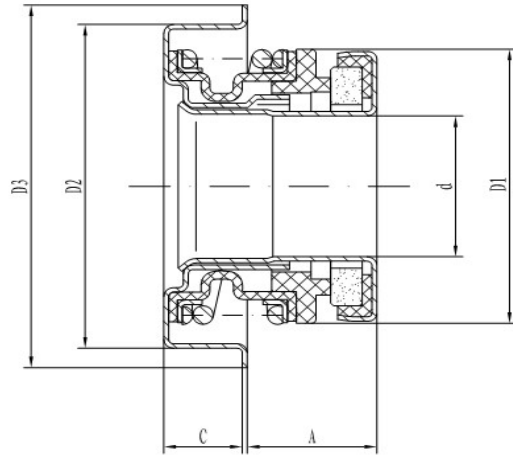
静止环 (Primary Ring): 石墨/碳化硅 (Carbon/Silicon Carbide)

旋转环 (Mating Ring): 陶瓷/碳化硅 (Ceramic/Silicon Carbide)

### 产品规格表 PRODUCT SPECIFICATIONS TABLE

型号 Model	d	A 压装尺寸 Work dimensions	C	D1	D2	D3	备注 Remark
C12W-0G	12	8.8	7.6	26.5	30	35	波形弹簧 wave spring
C16AW-0G	15.918	9.8	7	31.5	36.5	41	

## C12/C15/C16A/C17A/C20A系列水封 (C12/C15/C16A/C17A/C20A Series)



### 技术参数 TECHNICAL PARAMETERS

适用介质 (Medium): 清水、内燃机防冻液 (clean water, gas engine antifreeze)

介质压力 (Pressure):  $\leq 0.3\text{MPa}$

适用温度 (Applicable Temperature):  $-35\sim 135^{\circ}\text{C}$

水泵轴转速 (Rotary Speed):  $\phi 12 \leq 5200\text{r/min}$ ;  $\phi 15 \leq 5000\text{r/min}$ ;  $\phi 16 \leq 4800\text{r/min}$ ;  
 $\phi 17 \leq 4500\text{r/min}$ ;  $\phi 20 \leq 4000\text{r/min}$

### 材质 MATERIAL

冲压件、弹簧 (Stamping parts & Spring): 不锈钢 (Stainless Steel)

橡胶件 (Rubber parts): 丁腈橡胶、氢化丁腈橡胶, 长期工作温度 $100^{\circ}\text{C}$ 以上, 建议采用氢化丁腈橡胶。(NBR & HNBR, if long term working temperature is high over  $100^{\circ}\text{C}$ , we suggest use HNBR.)

静止环 (Primary Ring): 石墨/碳化硅 (Carbon/Silicon Carbide)

旋转环 (Mating Ring): 陶瓷/碳化硅 (Ceramic/Silicon Carbide)

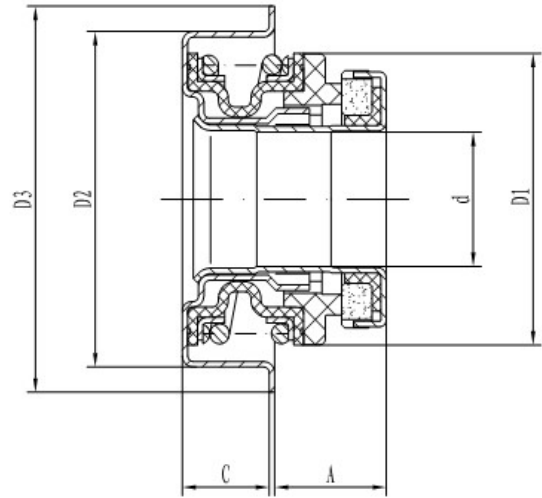
### 产品规格表 PRODUCT SPECIFICATIONS TABLE

型号 Model	d	A 压装尺寸 Work dimensions	C	D1	D2	D3	备注 Remark
C10	10	9.3	8	26.5	30	34.5	
C12-0	12	9.3	8	26.5	30	35	
C12-2	12	9.2	8	26.5	30	35	
C12-2U	12.7	9.2	6.3	26.5	28.5	35	
C12-3	12	7.1	8.5	26.5	30	35	
C12-3U	12	9.3	8	26.5	30	35	
C12-4	12	8.2	7.1	26.5	30	35	
C12-6	12	9.2	6.6	26.5	30	35	
C12-7	12	9.3	8	26.5	32	37	
C12-8	12	9.3	8	26.5	33.6	36.5MIN	
C12-9	12	7.5	7.1	26.5	30	35	

**产品规格表 PRODUCT SPECIFICATIONS TABLE**

型号 Model	d	A 压装尺寸 Work dimensions	C	D1	D2	D3	备注 Remark
C12-13	12	8.7	7.6	26.5	30	35	
C12-15	12	9.3	8	26.5	36.5	41	
C12-19	12	9.2	8	26.5	38.1	43.6	
C12-23	12	9.2	6	26.5	30	35	
C12-24	12.7	9.2	8	26.5	38.1	43.6	
C12-26	12	8.2	8	26.5	30	35	
C12-27	12	7.2	7.6	26.5	30	35	
C12-28	12	9.3	8	26.5	39.5	43.6	
C12-30	12	8.8	6.3	26.5	30	35	
C12-31	12	9.3	8	26.5	28.6	32MIN	
C13-1	13	8.9	8	26.5	30	35	
C13-2	13	8.9	8	26.5	32	37	
C15-1	15	10.6	8	28.8	36.5	41	
C15-2	15	10.6	8	28.8	30	35	
C16A-0	15.918	10.9	8	31.5	36.5	41	
C16A-4	15.918	10.9	8	31.5	35	41	
C16A-4U	15.918	11.1	6.5	31.5	34.2	39.5	
C16A-5U	15.918	10.9	8	31.5	36.45	41	
C16A-5	15.918	10.9	8	31.5	38.1	43.6	
C16A-6	15.918	11.84	7	31.5	34.2	39.5	
C16A-7	16	10.9	8	31.5	36.5	41	
C16A-11	15.918	10.9	8	31.5	39.5	43.6	
C16A-12	15.918	10.9	8	31.5	33.5	38	
C16A-13	15.918	10.9	8	31.5	55	62	
C16A-16	15.918	10.8	7.2	31.5	36.5	41	
C16A-17	15.918	9.3	7	31.5	34.2	39.5	
C16A-18	15.918	11.8	5.7	31.5	34.2	39.5	
C16A-21	16	11.8	7	31.5	36.5	41	
5301-2	15.918	10.9	8	31.5	36.55	41	
C17A-0	17	13.6	8	33.5	35	41	
C20A-2	20	11	9.3	37	40	44	

## C12B/C15B系列水封 (C12B/C15B Series)



### 技术参数 TECHNICAL PARAMETERS

适用介质 (Medium): 清水、内燃机防冻液 (clean water, gas engine antifreeze)

介质压力 (Pressure):  $\leq 0.3\text{MPa}$

适用温度 (Applicable Temperature):  $-35\sim 135^{\circ}\text{C}$

水泵轴转速 (Rotary Speed):  $\phi 12 \leq 7200\text{r/min}$ ;  $\phi 15 \leq 6500\text{r/min}$ ;

### 材质 MATERIAL

冲压件、弹簧 (Stamping parts & Spring): 不锈钢 (Stainless Steel)

橡胶件 (Rubber parts): 丁腈橡胶、氢化丁腈橡胶, 长期工作温度 $100^{\circ}\text{C}$ 以上, 建议采用氢化丁腈橡胶。(NBR & HNBR, if long term working temperature is high over  $100^{\circ}\text{C}$ , we suggest use HNBR.)

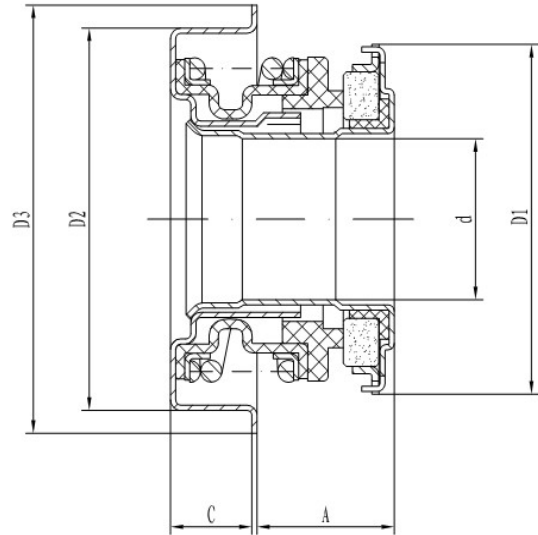
静止环 (Primary Ring): 石墨/碳化硅 (Carbon/Silicon Carbide)

旋转环 (Mating Ring): 碳化硅 (Silicon Carbide)

### 产品规格表 PRODUCT SPECIFICATIONS TABLE

型号 Model	d	A 压装尺寸 Work dimensions	C	D1	D2	D3	备注 Remark
C12B-0	12	8.4	7.2	26.5	30	35	
C12B-3	12	9.3	6.7	26.5	30	35	
C12B-7	12	8.4	8	26.5	30	35	
C15B-0	15	10.6	8	28	36.5	41	

## C12A/C16H系列水封 (C12A/C16H Series)



### 技术参数 TECHNICAL PARAMETERS

适用介质 (Medium): 清水、内燃机防冻液 (clean water, gas engine antifreeze)

介质压力 (Pressure):  $\leq 0.3\text{MPa}$

适用温度 (Applicable Temperature):  $-35\sim 135^{\circ}\text{C}$

水泵轴转速 (Rotary Speed):  $\phi 12 \leq 6500\text{r/min}$ ;  $\phi 16 \leq 6000\text{r/min}$ ;

### 材质 MATERIAL

冲压件、弹簧 (Stamping parts & Spring): 不锈钢 (Stainless Steel)

橡胶件 (Rubber parts): 丁腈橡胶、氢化丁腈橡胶, 长期工作温度 $100^{\circ}\text{C}$ 以上, 建议采用氢化丁腈橡胶。(NBR & HNBR, if long term working temperature is high over  $100^{\circ}\text{C}$ , we suggest use HNBR.)

静止环 (Primary Ring): 石墨/碳化硅 (Carbon/Silicon Carbide)

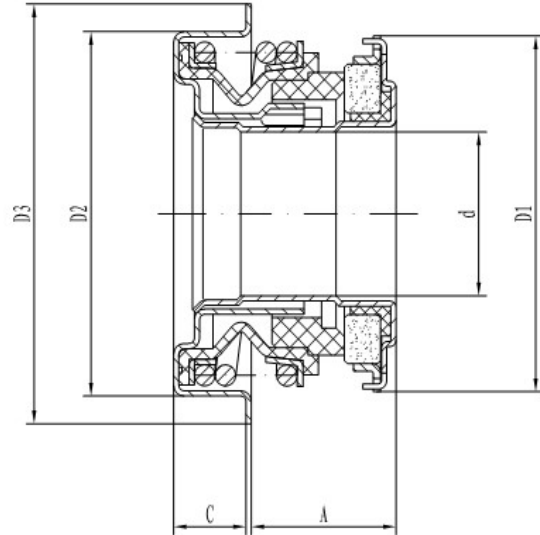
旋转环 (Mating Ring): 陶瓷/碳化硅 (Ceramic/Silicon Carbide)

### 产品规格表 PRODUCT SPECIFICATIONS TABLE

型号 Model	d	A 压装尺寸 Work dimensions	C	D1	D2	D3	备注 Remark
C12A-0	12.7	7.6	9.8	25	39.5	43.6	
C12A-2	12	9.3	8	25	30	35	
C12A-7	12	9.3	8	25	38.1	43.6	
C12A-11	12	9.3	7.6	25	30	35	
C12A-13	12	8.8	6.7	25	30	35	
C16H-0	15.918	10.9	8	33	35	41	
C16H-1	15.918	10.9	8	33	36.5	41	



## C16E系列水封 (C16E Series)



### 技术参数 TECHNICAL PARAMETERS

适用介质 (Medium): 清水、内燃机防冻液 (clean water, gas engine antifreeze)

介质压力 (Pressure):  $\leq 0.3\text{MPa}$

适用温度 (Applicable Temperature):  $-35\sim 135^{\circ}\text{C}$

水泵轴转速 (Rotary Speed):  $\leq 6800\text{r/min}$

### 材质 MATERIAL

冲压件、弹簧 (Stamping parts & Spring): 不锈钢 (Stainless Steel)

橡胶件 (Rubber parts): 丁腈橡胶、氢化丁腈橡胶, 长期工作温度 $100^{\circ}\text{C}$ 以上, 建议采用氢化丁腈橡胶。(NBR & HNBR, if long term working temperature is high over  $100^{\circ}\text{C}$ , we suggest use HNBR.)

静止环 (Primary Ring): 石墨/碳化硅 (Carbon/Silicon Carbide)

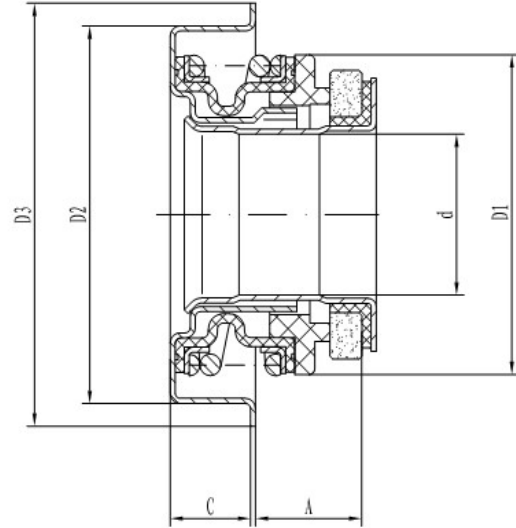
旋转环 (Mating Ring): 碳化硅 (Silicon Carbide)

### 产品规格表 PRODUCT SPECIFICATIONS TABLE

型号 Model	d	A 压装尺寸 Work dimensions	C	D1	D2	D3	备注 Remark
C16E-0	15.918	12.2	7	33	34.2	41	



## C12G/C15G/C16G系列水封 (C12G/C15G/C16G Series)



### 技术参数 TECHNICAL PARAMETERS

适用介质 (Medium): 清水、内燃机防冻液 (clean water, gas engine antifreeze)

介质压力 (Pressure):  $\leq 0.3\text{MPa}$

适用温度 (Applicable Temperature):  $-35\sim 135^{\circ}\text{C}$

水泵轴转速 (Rotary Speed):  $\phi 12 \leq 6500\text{r/min}$ ;  $\phi 15 \leq 6200\text{r/min}$ ;  $\phi 16 \leq 6000\text{r/min}$ ;

### 材质 MATERIAL

冲压件、弹簧 (Stamping parts & Spring): 不锈钢 (Stainless Steel)

橡胶件 (Rubber parts): 丁腈橡胶、氢化丁腈橡胶, 长期工作温度 $100^{\circ}\text{C}$ 以上, 建议采用氢化丁腈橡胶。(NBR & HNBR, if long term working temperature is high over  $100^{\circ}\text{C}$ , we suggest use HNBR.)

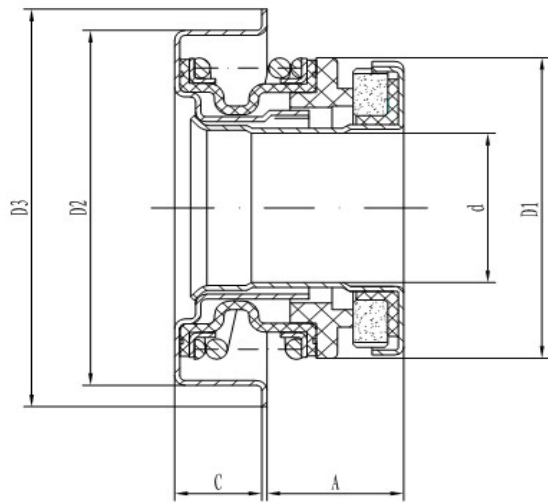
静止环 (Primary Ring): 石墨/碳化硅 (Carbon/Silicon Carbide)

旋转环 (Mating Ring): 陶瓷/碳化硅 (Ceramic/Silicon Carbide)

### 产品规格表 PRODUCT SPECIFICATIONS TABLE

型号 Model	d	A 压装尺寸 Work dimensions	C	D1	D2	D3	备注 Remark
C12G-3	12	9.1	8	26.5	30	35	
C12G-5	12.038	8.9	8	26.5	38.1	43.6	
C12G-8	12	7.1	7.5	26.5	30	35	
C12G-9	12.038	7.1	8	26.5	30	35	
C12G-10TQ	12	7.1	7.5	26.5	30	35	
C12G-12	12.038	6.37	9.8	26.5	39.5	43.6	
C12G-13	12.038	8.9	8	26.5	47.6	54	
C15G-1	15	9.3	8.2	28	36.5	41	
C15G-2	15	10.7	8	28	36.5	41	
C16G-0	15.918	10.8	8	31.5	36.5	41	
C16G-1	15.918	10.8	8	31.5	38.1	43.6	
C16G-3	15.918	10.8	8	31.5	38.6	43.6	
C16G-4	15.918	10.8	8	31.5	39.5	43.6	

## C12D/ C16R/ C17R系列水封 (C12D/ C16R/ C17R Series)



### 技术参数 TECHNICAL PARAMETERS

适用介质 (Medium): 清水、内燃机防冻液 (clean water, gas engine antifreeze)

介质压力 (Pressure):  $\leq 0.3\text{MPa}$

适用温度 (Applicable Temperature):  $-35\sim 135^{\circ}\text{C}$

水泵轴转速 (Rotary Speed):  $\phi 12 \leq 7200\text{r/min}$ ;  $\phi 16 \leq 6500\text{r/min}$ ;  $\phi 17 \leq 5800\text{r/min}$

### 材质 MATERIAL

冲压件、弹簧 (Stamping parts & Spring): 不锈钢 (Stainless Steel)

橡胶件 (Rubber parts): 丁腈橡胶、氢化丁腈橡胶, 长期工作温度 $100^{\circ}\text{C}$ 以上, 建议采用氢化丁腈橡胶。(NBR & HNBR, if long term working temperature is high over  $100^{\circ}\text{C}$ , we suggest use HNBR.)

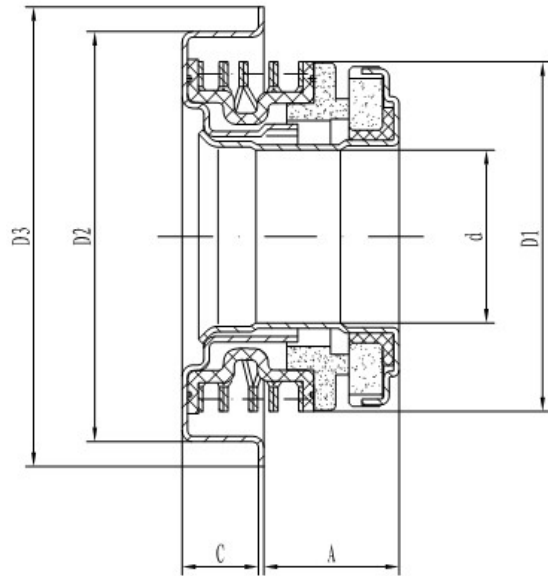
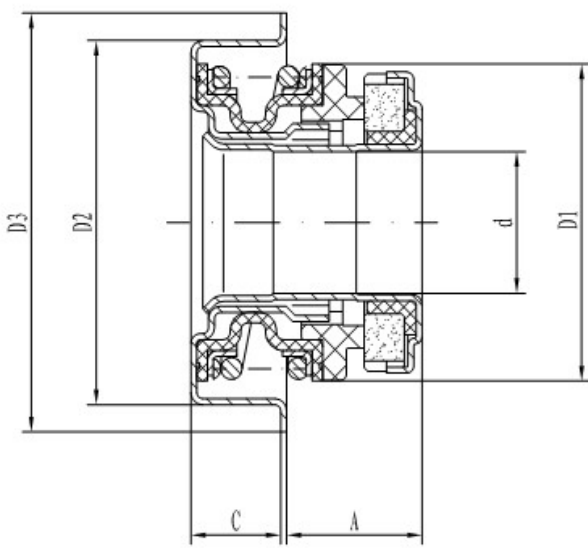
静止环 (Primary Ring): 石墨/碳化硅 (Carbon/Silicon Carbide)

旋转环 (Mating Ring): 碳化硅 (Silicon Carbide)

### 产品规格表 PRODUCT SPECIFICATIONS TABLE

型号 Model	d	A 压装尺寸 Work dimensions	C	D1	D2	D3	备注 Remark
C12D	12	0.4+8.9	7.6	26.5	30	35	
C16R-0	15.918	0.4+11.84	7.1	31.5	34.2	39.5	
C16R-1	15.918	0.4+10.7	8.2	31.5	36.5	41	
C16R-2	16	0.4+10.7	8.2	31.5	38.1	43.6	
C17R-0	17	0.4+13.6	8	33.5	35	41	

## 双碳化硅系列水封 (Double SIC Series)



### 技术参数 TECHNICAL PARAMETERS

适用介质 (Medium): 清水、内燃机防冻液 (clean water, gas engine antifreeze)

介质压力 (Pressure):  $\leq 0.3\text{MPa}$

适用温度 (Applicable Temperature):  $-35\sim 135^{\circ}\text{C}$

水泵轴转速 (Rotary Speed):  $\phi 12 \leq 7200\text{r/min}$ ;  $\phi 16 \leq 6500\text{r/min}$ ;  $\phi 17 \leq 5800\text{r/min}$ ;  
 $\phi 19 \leq 5500\text{r/min}$ ;  $\phi 20 \leq 5000\text{r/min}$



## 双碳化硅系列水封(Double SIC Series)

### 材质 MATERIAL

冲压件、弹簧 (Stamping parts & Spring): 不锈钢(Stainless Steel)

橡胶件(Rubber parts): 氢化丁腈橡胶( HNBR )

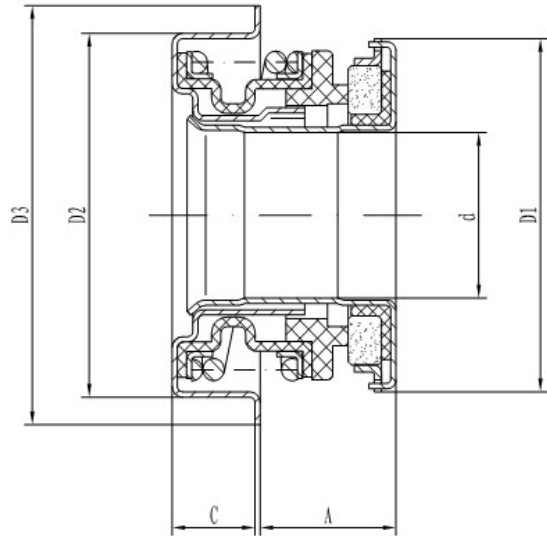
静止环(Primary Ring): 碳化硅(Sillicon Carbide)

旋转环(Mating Ring): 碳化硅(Sillicon Carbide)

### 产品规格表 PRODUCT SPECIFICATIONS TABLE

型号 Model	d	A 压装尺寸 Work dimensions	C	D1	D2	D3	备注 Remark
C12CS-0	12	7.1	5.5	26	30	35	波形弹簧 wave spring
C16JW-0	15.918	10.1	7	31.5	34.2	39.5	波形弹簧 wave spring
C16JW-1	15.918	10.1	7	31.5	36.5	41	波形弹簧 wave spring
C16S-0	15.918	12.2	7	31.5	34.2	39.5	C16J系列结构 C16J Series
C16S-1	15.918	10.8	8	31.5	36.5	41	C16J系列结构 C16J Series
C17S-0	17	13.5	8	33.5	35	41	C17R系列结构 C17R Series
C19S-0	19	14	9	36.5	38	46	C20系列结构 C20 Series
C20S-0	20	12.5	10	36.5	40	46	C20系列结构 C20 Series

## C16/C17系列水封 (C16/C17 Series)



### 技术参数 TECHNICAL PARAMETERS

适用介质 (Medium): 清水、内燃机防冻液 (clean water, gas engine antifreeze)

介质压力 (Pressure):  $\leq 0.3\text{MPa}$

适用温度 (Applicable Temperature):  $-35\sim 135^{\circ}\text{C}$

水泵轴转速 (Rotary Speed):  $\phi 16 \leq 6000\text{r/min}$ ;  $\phi 17 \leq 5300\text{r/min}$ ;

### 材质 MATERIAL

冲压件、弹簧 (Stamping parts & Spring): 不锈钢 (Stainless Steel)

橡胶件 (Rubber parts): 丁腈橡胶、氢化丁腈橡胶, 长期工作温度 $100^{\circ}\text{C}$ 以上, 建议采用氢化丁腈橡胶。(NBR & HNBR, if long term working temperature is high over  $100^{\circ}\text{C}$ , we suggest use HNBR.)

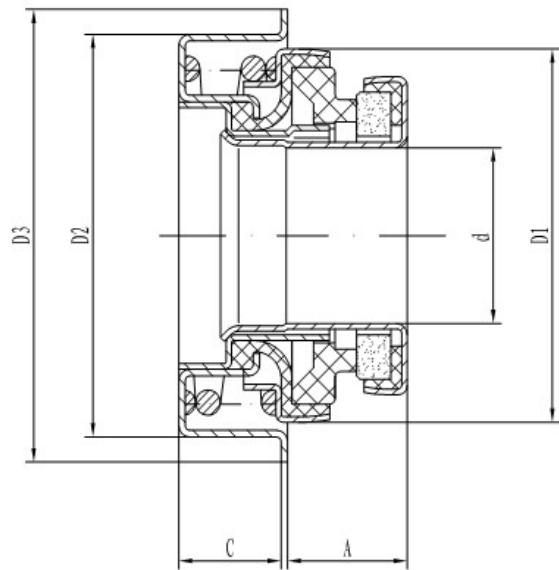
静止环 (Primary Ring): 石墨/碳化硅 (Carbon/Silicon Carbide)

旋转环 (Mating Ring): 陶瓷/碳化硅 (Ceramic/Silicon Carbide)

### 产品规格表 PRODUCT SPECIFICATIONS TABLE

型号 Model	d	A 压装尺寸 Work dimensions	C	D1	D2	D3	备注 Remark
C16-0	15.918	12.3	7.1	33	34.2	39.5	
C16C-a	15.918	11.84	5.7	33	34.2	39.5	
C17-0	17	13.6	8	33	35	41	

## C16B系列水封 (C16B Series)



### 技术参数 TECHNICAL PARAMETERS

适用介质 (Medium): 清水、内燃机防冻液 (clean water, gas engine antifreeze)

介质压力 (Pressure):  $\leq 0.3\text{MPa}$

适用温度 (Applicable Temperature):  $-35\sim 135^{\circ}\text{C}$

水泵轴转速 (Rotary Speed):  $\leq 5500\text{r/min}$

### 材质 MATERIAL

冲压件、弹簧 (Stamping parts & Spring): 不锈钢 (Stainless Steel)

橡胶件 (Rubber parts): 丁腈橡胶、氢化丁腈橡胶, 长期工作温度 $100^{\circ}\text{C}$ 以上, 建议采用氢化丁腈橡胶。(NBR & HNBR, if long term working temperature is high over  $100^{\circ}\text{C}$ , we suggest use HNBR.)

静止环 (Primary Ring): 石墨/碳化硅 (Carbon/Silicon Carbide)

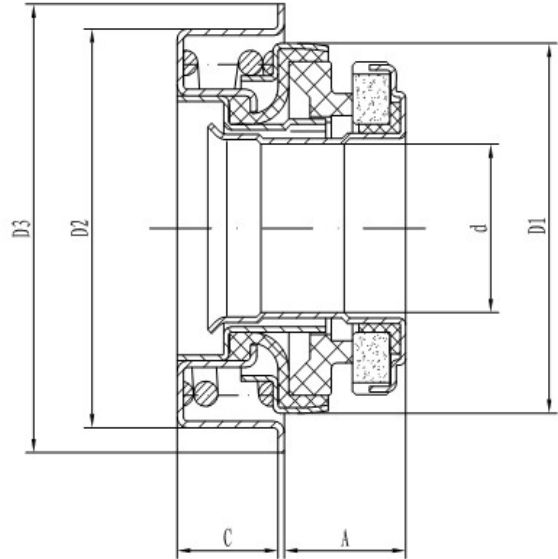
旋转环 (Mating Ring): 陶瓷/碳化硅 (Ceramic/Silicon Carbide)

### 产品规格表 PRODUCT SPECIFICATIONS TABLE

型号 Model	d	A 压装尺寸 Work dimensions	C	D1	D2	D3	备注 Remark
C16B-0	15.918	10.8	9.5	33.6	36.5	41	



## C16D系列水封 (C16D Series)



### 技术参数 TECHNICAL PARAMETERS

适用介质 (Medium): 清水、内燃机防冻液 (clean water, gas engine antifreeze)

介质压力 (Pressure):  $\leq 0.3$  MPa

适用温度 (Applicable Temperature):  $-35 \sim 135^{\circ}\text{C}$

水泵轴转速 (Rotary Speed):  $\leq 6500$  r/min

### 材质 MATERIAL

冲压件、弹簧 (Stamping parts & Spring): 不锈钢 (Stainless Steel)

橡胶件 (Rubber parts): 丁腈橡胶、氢化丁腈橡胶, 长期工作温度  $100^{\circ}\text{C}$  以上, 建议采用氢化丁腈橡胶。(NBR & HNBR, if long term working temperature is high over  $100^{\circ}\text{C}$ , we suggest use HNBR.)

静止环 (Primary Ring): 石墨/碳化硅 (Carbon/Silicon Carbide)

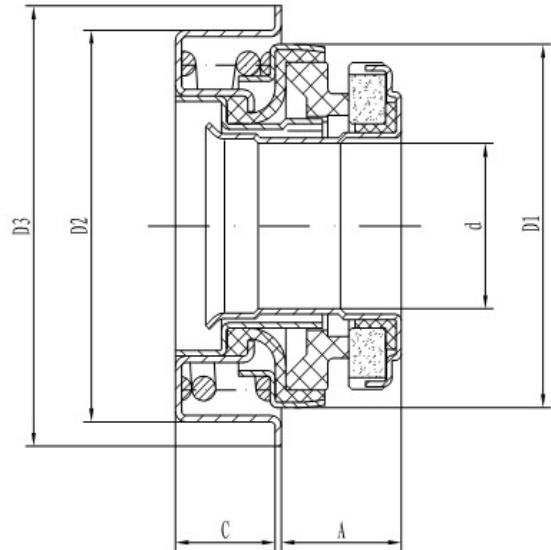
旋转环 (Mating Ring): 陶瓷/碳化硅 (Ceramic/Silicon Carbide)

### 产品规格表 PRODUCT SPECIFICATIONS TABLE

型号 Model	d	A 压装尺寸 Work dimensions	C	D1	D2	D3	备注 Remark
C16D-0	15.918	10.8	9.5	33.6	36.5	41	



## C16B-a系列水封 (C16B-a Series)



### 技术参数 TECHNICAL PARAMETERS

适用介质 (Medium): 清水、内燃机防冻液 (clean water, gas engine antifreeze)

介质压力 (Pressure):  $\leq 0.3\text{MPa}$

适用温度 (Applicable Temperature):  $-35\sim 135^{\circ}\text{C}$

水泵轴转速 (Rotary Speed):  $\leq 6800\text{r/min}$

### 材质 MATERIAL

冲压件、弹簧 (Stamping parts & Spring): 不锈钢 (Stainless Steel)

橡胶件 (Rubber parts): 丁腈橡胶、氢化丁腈橡胶, 长期工作温度 $100^{\circ}\text{C}$ 以上, 建议采用氢化丁腈橡胶。(NBR & HNBR, if long term working temperature is high over  $100^{\circ}\text{C}$ , we suggest use HNBR.)

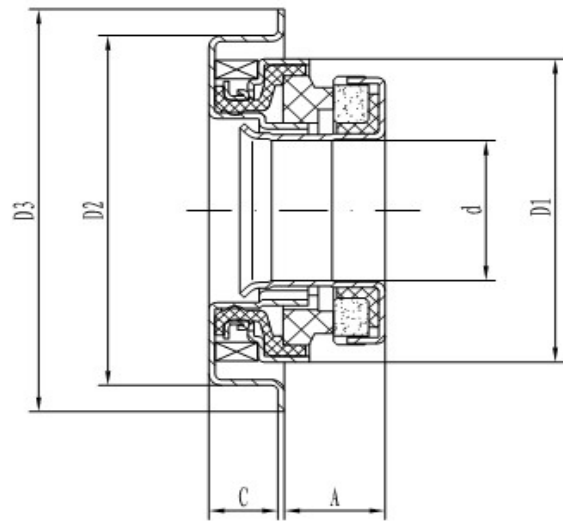
静止环 (Primary Ring): 石墨/碳化硅 (Carbon/Silicon Carbide)

旋转环 (Mating Ring): 碳化硅 (Silicon Carbide)

### 产品规格表 PRODUCT SPECIFICATIONS TABLE

型号 Model	d	A 压装尺寸 Work dimensions	C	D1	D2	D3	备注 Remark
C16B-a	15.918	10.8	9.5	33.6	36.5	41	

## C12C系列水封 (C12C Series)



### 技术参数 TECHNICAL PARAMETERS

适用介质 (Medium): 清水、内燃机防冻液 (clean water, gas engine antifreeze)

介质压力 (Pressure):  $\leq 0.3$  MPa

适用温度 (Applicable Temperature):  $-35 \sim 135^{\circ}\text{C}$

水泵轴转速 (Rotary Speed):  $\leq 9000$  r/min

### 材质 MATERIAL

冲压件、弹簧 (Stamping parts & Spring): 不锈钢 (Stainless Steel)

橡胶件 (Rubber parts): 氢化丁腈橡胶 (HNBR)

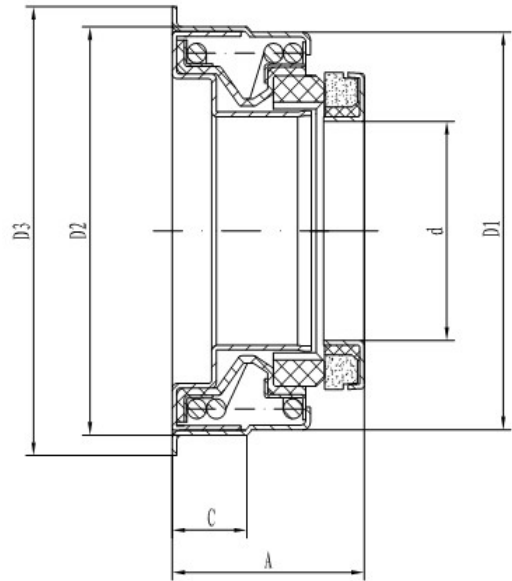
静止环 (Primary Ring): 石墨/碳化硅 (Carbon/Silicon Carbide)

旋转环 (Mating Ring): 碳化硅 (Silicon Carbide)

### 产品规格表 PRODUCT SPECIFICATIONS TABLE

型号 Model	d	A 压装尺寸 Work dimensions	C	D1	D2	D3	备注 Remark
C12C-0	12	0.4+7.1	5.5	26	30	35	波形弹簧 wave spring

## B42水封 (B42 water seal)



### 技术参数 TECHNICAL PARAMETERS

适用介质 (Medium): 清水、内燃机防冻液 (clean water, gas engine antifreeze)

介质压力 (Pressure):  $\leq 0.3\text{MPa}$

适用温度 (Applicable Temperature):  $-35\sim 135^{\circ}\text{C}$

水泵轴转速 (Rotary Speed):  $\leq 3000\text{r/min}$

### 材质 MATERIAL

冲压件、弹簧 (Stamping parts & Spring): 不锈钢 (Stainless Steel)

橡胶件 (Rubber parts): 氢化丁腈橡胶 (HNBR)

静止环 (Primary Ring): 碳石墨 (Carbon)

旋转环 (Mating Ring): 碳化硅 (Silicon Carbide)

### 产品规格表 PRODUCT SPECIFICATIONS TABLE

型号 Model	d	A 压装尺寸 Work dimensions	C	D1	D2	D3	备注 Remark
B42	42	29.5+7.9	14	75.6	76.3	85	